

THE PAKEMAN PRESS



**Pakeman
Primary
School**

Thank you for taking the time to read this weekly newsletter. We hope you will find its contents useful.

Issue 7 Spring Term 2022

Friday 11th March 2022

Healthy Early Years Bronze Award

We are delighted to say that our Early Years have been recognised as an Islington Healthy Early Years setting and has just received the Healthy Early Years Bronze Award. This award scheme works with settings to ensure a good level of support for the health, well-being and education of children under five and their families. Very well done to all our Early Years staff and particularly to Cheryl and Louise for making the award happen.



DATES FOR YOUR DIARY

Easter Holidays:

Break up
Fri 1st April

-
Back to school
Wed 20th April

INSET DAY
Tues 19th April



We are proud of our latest Ofsted report. To view this in full please visit the link:

[50178850 \(ofsted.gov.uk\)](https://www.ofsted.gov.uk/50178850)

The Great Fire Of London

This term, years 1 and 2 children have been learning about the Great Fire of London. They have worked well together to produce amazing Tudor houses to help them understand more about what houses looked like at that time. Click on the link to find out more about the fire.

[London in 1066](#)



STARS OF THE WEEK



Indigo	Eliakim
Lilac	Kaelen
Silver	Anthony
Crimson	Sakima
Yellow	Lizzie
Gold	Kayla
Green	Aysha B
Pink	Ijeoma
Purple	Sidharth
Orange	Scarlett
Brown	Asma
Red	Saeedah
Blue	Alicia

Well done superstars!



Attendance and Punctuality

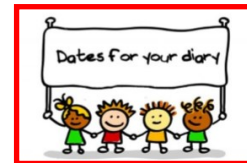
Year Group	Best Attendance	Most Improved Attendance	Best Punctuality
EYFS & KS1	Green Class	Green Class	Silver Class
KS2	Pink Class	Pink Class	Purple Class Blue Class



Playcentre

Please note that Playcentre will be closed on 20th April for one day.

Please put this date in your diary!



British Science Week

Next week 11th - 18th March is **BRITISH SCIENCE WEEK**.

The theme is 'Growth' and children will be carrying out a range of activities and looking at all sorts of growth, including buildings, eco-friendly behaviours, animals and even how we can grow plants on Mars! There will also be a poster competition in school.

If you're looking for activities you can do at home the Primary Science Trust have some great experiments you can try - [Science Fun At Home](#)



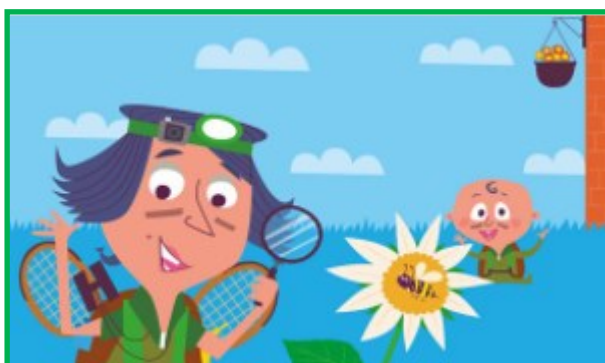
Also, check out the [Fun, Family Science](#) pack. The pack includes downloadable activities with crosswords, colour by numbers sheets and lots of fascinating facts.

This link – [Community Activity Pack](#) also offers a selection of ideas that can be done at home for various age groups.

For anyone wanting to explore science investigations, through a range of fun and engaging short videos, then take a look at the following links:

[CBeebies—Science](#)

[Primary Science](#)





Calmer Nights Sleep Workshop

For many families with young children a good night's sleep can be a rare treat!

Join us to explore ways to improve both your and your child's sleep and to **feel more confident** about your family's routine.

Monday 14th March 2022

9.30am – 11.30am

Location: Zoom



For parents with children aged 1-5 years and parents who live or have a GP in Islington



A free NHS workshop

To book a place call **Marta Bacigalupi** from Monday to Wednesday (9 to 5) on:

07767298853

Or register **online** at:

<https://www.eventbrite.co.uk/e/calmer-nights-workshop-tickets-268800047177>

Or **scan** the QR beside.



Pop-up community wellbeing events

Drop in to find out about support and activities available for people of all ages:

- Food distribution and low cost recipes
- Adult leisure and learning opportunities
- How to maximise family income
- Employment opportunities
- How to save on your energy bills
- Family and parenting support
- After school and holiday activities for children and young people
- Childcare and free early learning for under fives

Andover Community Centre
18 March
from 2-4pm

Mildmay Community Centre
18 March, from 11.30am-1.30pm

St. Luke's Community Centre
30 March
from 12-2pm

For more information, call: 020 7527 4343

Follow us [facebook.com/islingtonfis](https://www.facebook.com/islingtonfis)



Supported by



Child and Family Support at Pakeman

If you need support to access any of the Islington services available for families please contact Natalie or Marcia. They will be very happy to help. You can find both in the playground at the start and end of the school day.

Email: nbroomes@pakeman.islington.sch.uk OR mharris@pakeman.islington.sch.uk

Tel: **020 7607 2575**



Year 1 Phonics - Parent Meetings (REMINDER)

Please come along to the lodge and hear staff advise you on best ways to support your children with SATs and Phonics

Tuesday 22nd March 9am - Phonics Screening (Year 1)

Hazel (Phonics Lead) and Ben (Deputy) will be giving information to parents/carers of pupils in Year 1 on how to help your children prepare for the phonics screening check.

